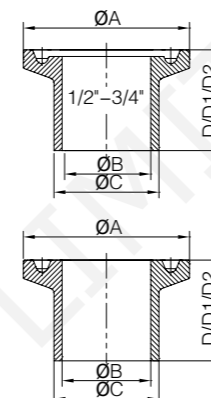


# Sanitary Clamp fitting



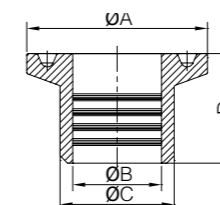
## Sanitary Clamp fitting

3A



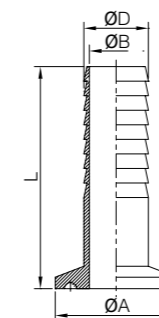
14WMP/14AMP Clamped Ferrule

Size	A	B	C	D	D2
1/2"	25.2	9.4	12.7	12.7	28.6
3/4"	25.2	15.75	19.05	12.7	28.6
1"	50.5	22.1	25.4	12.7	28.6
1 1/4"	50.5	28.5	31.8	12.7	28.6
1 1/2"	50.5	34.8	38.1	12.7	28.6
2"	64.0	47.5	50.8	12.7	28.6
2 1/2"	77.5	60.2	63.5	12.7	28.6
3"	91.0	72.9	76.2	12.7	28.6
4"	119.0	97.4	101.6	15.9	28.6
6"	166.8	146.8	152.4	21.5	38.1
8"	217.7	197.6	203.2	21.5	38.1
10"	268.5	248.4	254	21.5	38.1
12"	319.3	299.2	304.8	21.5	38.1



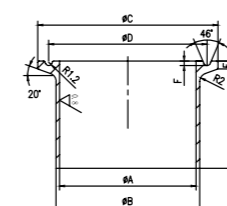
14RMP Expanding Clamped Ferrule

Size	A	B	C	D
1"	50.5	25.5	29.5	19.1
1.5"	50.5	38.2	42.6	28.6
2"	64	50.9	55.7	33.3
2.5"	77.5	63.6	68.8	34.9
3"	91	76.3	81.9	36.5
4"	119	101.7	108.1	38.1
40mm	50.5	40.2	43.8	28.6



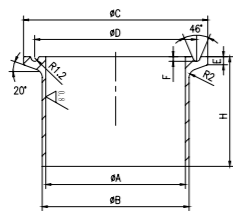
14MPHR Rubber Hose Adapter

Size	A	B	D	L
1/2"	25.2	9.0	12.7	50.8
3/4"	25.2	15.0	19.0	50.8
1"	50.5	21.4	25.4	114.3
1 1/4"	50.5	27.8	31.8	114.3
1 1/2"	50.5	34.0	38.1	114.3
2"	64.0	47.0	50.8	114.3
2 1/2"	77.5	59.5	63.5	114.3
3"	91.0	72.2	76.2	114.3
4"	119.0	97.6	101.6	114.3



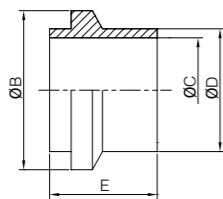
14WLMP Ferrule

Size	A	B	C	H
1"	22.10	25.40	50.40	76.20
1 1/2"	34.80	38.10	50.40	76.20
2"	47.50	50.80	63.90	76.20
2 1/2"	60.20	63.50	77.40	76.20
3"	72.90	76.20	90.90	101.60
4"	97.40	101.60	118.92	101.60
6"	146.86	152.40	166.88	152.40



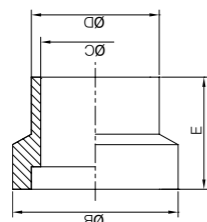
14MPW Ferrule

Size	A	B	C	H
1"	22.10	29.46	50.40	41.28
1 1/2"	34.80	42.57	50.40	41.28
2"	47.50	55.68	63.90	44.45
2 1/2"	60.20	68.78	77.40	44.45
3"	72.90	81.89	90.90	46.05
4"	97.40	108.1	118.92	53.98
6"	146.86	157.28	166.88	63.50



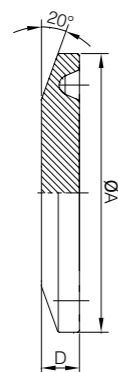
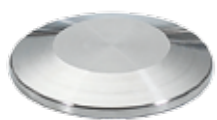
14WI/14WIL Ferrule

Size	B	C	D	E	
				14WI	14WIL
1"	50.67	22.1	25.65	19.84	44.5
1 1/2"	50.67	34.8	38.35	23.8	46.7
2"	67.06	47.5	51.05	26.19	58.9
2 1/2"	84.0	60.2	63.75	29.36	63.4
3"	98.3	72.9	76.45	30.94	68.2
4"	123.7	97.38	101.85	34.11	76.2



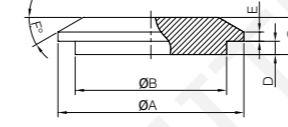
15WI/15WIL Ferrule

Size	B	C	D	E	
				15WI	15WIL
1"	50.67	22.1	25.65	19.84	44.5
1 1/2"	50.67	34.8	38.35	23.8	46.7
2"	67.06	47.5	51.05	26.19	58.9
2 1/2"	84.0	60.2	63.75	29.36	63.4
3"	98.3	72.9	76.45	30.94	68.2
4"	123.7	97.38	101.85	34.11	76.2



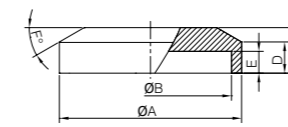
16AMP Blank

Size	A	D
1/2"-3/4"	25.2	5.0
A37	34.0	6.3
1-1.5"	50.5	6.3
2"	64.0	6.3
2.5"	77.5	6.3
3"	91.0	6.3
4"	119.0	7.9
6"	166.8	11.1
8"	217.7	11.1
10"	268.5	11.1
12"	319.3	11.1



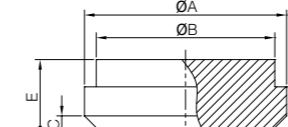
16AI-14WI Male Solid End Cap

Size	A	B	C	D	E	F
1"	50.42	31.75	12.70	4.95	2.67	37°
1 1/2"	50.42	44.20	12.70	4.95	2.67	37°
2"	67.06	56.90	14.27	6.48	2.33	37°
2 1/2"	84.00	69.60	19.05	7.87	3.20	37°
3"	98.30	83.82	17.78	7.87	3.20	37°
4"	123.70	109.14	19.05	7.87	3.20	37°
6"	190.37	173.48	22.35	4.72	3.20	30°
8"	241.17	224.28	22.35	4.72	3.20	30°



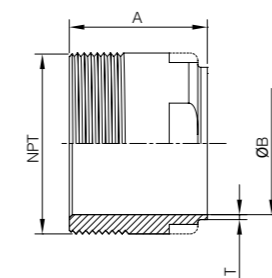
16AI-15WI Female Solid End Cap

Size	A	B	C	D	E	F
1"	50.42	32.13	12.70	8.0	6.32	37°
1 1/2"	50.42	44.58	12.70	8.0	6.32	37°
2"	67.06	57.28	14.27	11.61	7.85	37°
2 1/2"	84.00	69.98	19.05	11.13	9.25	37°
3"	98.30	84.20	17.78	11.13	9.25	37°
4"	123.70	109.60	19.05	11.13	9.25	37°
6"	190.37	175.74	22.35	11.13	6.10	30°
8"	241.17	226.54	22.35	11.13	6.10	30°



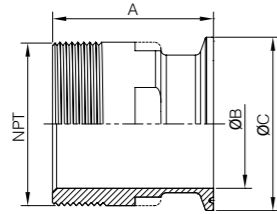
16A End Cap

Size	A	B	C	D	E
1"	33.4	29.5	3.3	8.1	12.6
1.5"	46.8	42.6	4.0	8.7	14.3
2"	60.5	55.7	4.0	10.4	16.0
2.5"	73.9	68.8	4.8	11.9	18.2
3"	87.5	81.9	4.8	11.9	18.3
4"	114.5	108.1	6.3	14.2	20.6



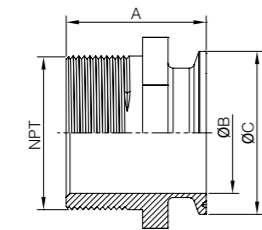
19WB Weld-Male NPT Adapter

Size	A	B	T	NPT
1/2"	41.3	9.4	1.65	NPT1/2x14
3/4"	41.3	15.8	1.65	NPT3/4x14
1"	44.5	22.1	1.65	NPT1x11.5
1 1/4"	44.5	28.5	1.65	NPT1 1/4x11.5
1 1/2"	44.5	34.8	1.65	NPT1 1/2x11.5
2"	46.0	47.5	1.65	NPT2x11.5
2 1/2"	58.7	60.2	1.65	NPT2 1/2x8
3"	63.5	72.9	1.65	NPT3x8
4"	65.1	97.4	2.1	NPT4x8



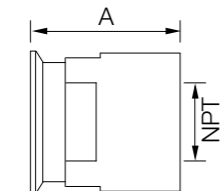
19-14MP NPT Male Clamped Adapter

Size	A	B	C	NPT
1/2"	54.0	9.4	25.1	NPT1/2x14
3/4"	54.0	15.8	25.1	NPT3/4x14
1"	57.2	22.1	50.4	NPT1x11.5
1 1/4"	57.2	28.5	50.4	NPT1 1/4x11.5
1 1/2"	57.2	34.8	50.4	NPT1 1/2x11.5
2"	58.7	47.5	63.9	NPT2x11.5
2 1/2"	71.4	60.2	77.4	NPT2 1/2x8
3"	76.2	72.9	90.9	NPT3x8
4"	81.0	97.4	118.9	NPT4x8



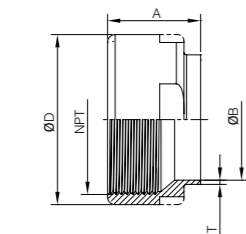
21MP NPT Male Hexagon Clamped Adapter

Size	NPT	A
1"	3/4"	55.5
1"	1"	57.2
1 1/2"	1"	61.9
1 1/2"	1-1/2"	57.2
1 1/2"	2"	66.7
2"	1-1/2"	66.7
2"	2"	67.0
2 1/2"	2-1/2"	73.0
3"	1-1/2"	76.2
3"	2"	76.2
3"	2-1/2"	76.2
4"	3"	96.9
4"	4"	80.1



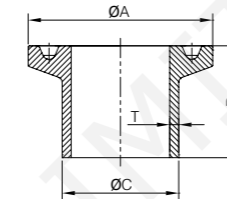
22MP NPT Female Clamped Adapter

Size	NPT	A
1"	3/4"	41.3
1"	1"	41.3
1 1/2"	1"	57.2
1 1/2"	1-1/2"	57.2
1 1/2"	2"	63.5
2"	1-1/2"	59.5
2"	2"	61.1
2 1/2"	2-1/2"	55.5
3"	1-1/2" w	55.5
3"	2"	55.5
3"	2-1/2"	55.5
3"	3"	55.5
4"	3"	55.5
4"	4"	92.8



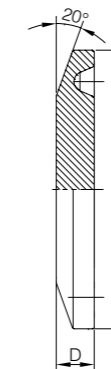
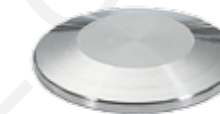
22WB NPT Female Welded Adapter

Size	A	B	T	NPT	D
1/2"	28.6	9.4	1.65	NPT 1/2x14	30.0
3/4"	28.6	15.8	1.65	NPT 3/4x14	33.3
1"	28.6	22.1	1.65	NPT 1x11.5	41.3
1 1/4"	36.5	28.5	1.65	NPT 1 1/4x11.5	47.6
1 1/2"	36.5	34.8	1.65	NPT 1 1/2x11.5	55.0
2"	36.5	47.5	1.65	NPT 2x11.5	73.0
2 1/2"	41.3	60.2	1.65	NPT 2 1/2x8	79.0
3"	46.0	72.9	1.65	NPT 3x8	100.0
4"	50.8	97.4	2.1	NPT 4x8	125.0



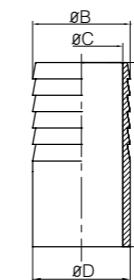
Clamped ferrule

Size	A	C	D1	D2	T
DN15	34.0	18.0	18.0	28.0	1.5
DN20	34.0	22.0	18.0	28.0	1.5
DN25	50.4	28.0	21.5	28.0	1.5
DN32	50.4	34.0	21.5	28.0	1.5
DN40	50.4	40.0	21.5	28.0	1.5
DN50	64.0	52.0	21.5	28.0	1.5
DN65	90.9	70.0	28.0	28.0	2.0
DN80	106.0	85.0	28.0	28.0	2.0
DN100	118.8	104.0	28.0	28.0	2.0
DN155	145.0	129.0	28.0	28.0	2.0
DN183	167.0	154.0	28.0	28.0	2.0



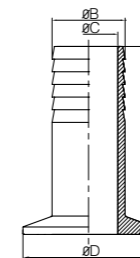
Blank

Size	A	D
DN15	34.00	6.40
DN20	34.00	6.40
DN25	50.50	6.40
DN32	50.50	6.40
DN40	50.50	6.40
DN50	64.00	6.40
DN65	91.00	6.40
DN80	106.00	6.40
DN100	119.00	7.90
DN125	144.50	11.10
DN125	155.00	11.10
DN150	167.00	11.10
DN150	183.00	11.10
DN200	217.40	11.10
DN200	233.50	11.10



Welded Hose Nipple (DIN 11864)

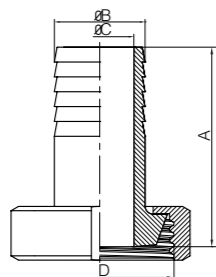
Size	A	B	C	D
DN15	50	19.5	16	19
DN20	48	23.5	20	23
DN25	58	30.0	26	29
DN32	68	35.5	32	35
DN40	78	43.0	38	41
DN50	88	55.0	50	53
DN65	97	73.0	66	70
DN80	107	89.0	81	85
DN100	116	108.0	100	104



Clamp Hose Nipple (DIN 11864)

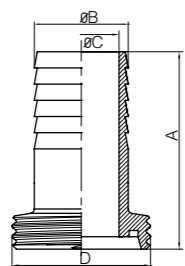
Size	A	B	C	D
DN15	68	19.5	16	34
DN20	66	23.5	20	50.5
DN25	79.5	30.0	26	50.5
DN32	89.5	35.5	32	50.5
DN40	99.5	43.0	38	50.5
DN50	109.5	55.0	50	64
DN65	125	73.0	66	91
DN80	135	89.0	81	106
DN100	144	108.0	100	119

Union-type Hose Coupling (DIN 11864)



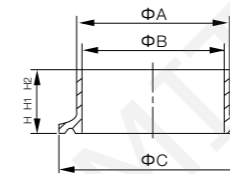
Size	A	B	C	D
DN15	63	19.5	16	RD34x1/8
DN20	63	23.5	20	RD44x1/6
DN25	75	30.0	26	RD52x1/6
DN32	85	35.5	32	RD58x1/6
DN40	95	43.0	38	RD65x1/6
DN50	106	55.0	50	RD78x1/6
DN65	117	73.0	66	RD95x1/6
DN80	127	89.0	81	RD110x1/4
DN100	140	108.0	100	RD130x1/4

Male Hose Nipple (DIN 11864)



Size	A	B	C	D
DN15	67	19.5	16	RD34x1/8
DN20	69	23.5	20	RD44x1/6
DN25	82	30.0	26	RD52x1/6
DN32	92	35.5	32	RD58x1/6
DN40	102	43.0	38	RD65x1/6
DN50	113	55.0	50	RD78x1/6
DN65	125	73.0	66	RD95x1/6
DN80	135	89.0	81	RD110x1/4
DN100	150	108.0	100	RD130x1/4

Ferrule



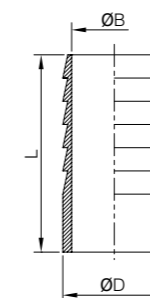
Size	A	B	C	H	H1	H2
3/4"	19	16	34.00	12.70	21.50	28.60
1"	25.4	22.4	50.50	12.70	21.50	28.60
1 1/4"	31.8	28.8	50.50	12.70	21.50	28.60
1 1/2"	38	35	50.50	12.70	21.50	28.60
2"	51	48	64.00	12.70	21.50	28.60
2 1/2"	63.5	59.5	77.50	12.70	21.50	28.60
3"	76.2	72.2	91.00	12.70	21.50	28.60
4"	101.6	97.6	119.00	15.90	21.50	28.60

Blank



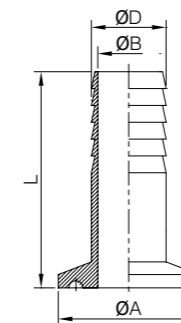
Size	A	D
12.7-19	25.2	5.0
37	34.0	6.4
25-38	50.5	6.4
51	64.0	6.4
63	77.5	6.4
76	91.0	6.4
102	119.0	8.0
152.4	166.8	11.0
203	217.7	11.0
254	268.5	11.0
305	319.3	11.0

Welded hose coupling

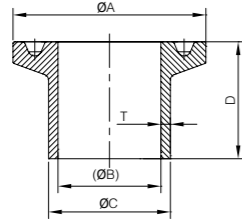


Size	B	D	L
12.7	9.0	12.7	45.0
19	15.0	19.0	45.0
25	21.4	25.4	60.0
32	27.8	31.8	60.0
38	34.0	38.1	60.0
51	47.0	50.8	60.0
63	59.5	63.5	70.0
76	72.2	76.2	80.0
102	97.6	101.6	80.0

Clamped hose coupling

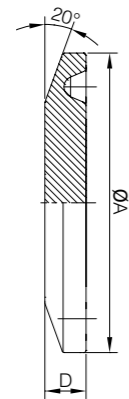
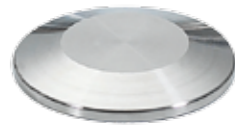


Size	A	B	D	L
12.7	25.2	9.0	12.7	66.0
19	25.2	15.0	19.0	66.0
25	50.5	21.4	25.4	81.0
32	50.5	27.8	31.8	81.0
38	50.5	34.0	38.1	81.0
51	64.0	47.0	50.8	81.0
63	77.5	59.5	63.5	91.0
76	91.0	72.2	76.2	101.0
102	119.0	97.6	101.6	101.0



Clamp Ferrule

Size	B	C	A	T	D1	D2	D3
21.3	18.1	21.3	34	1.6	12.7	21.5	28.6
26.9	23.7	26.9	50.4	1.6	12.7	21.5	28.6
33.7	29.7	33.7	50.4	1.6	12.7	21.5	28.6
42.4	38.4	42.4	50.4	1.6	12.7	21.5	28.6
48.3	44.3	48.3	64	1.6	12.7	21.5	28.6
60.3	56.3	60.3	77.5	1.6	12.7	21.5	28.6
76.1	71.5	76.1	91	1.6	12.7	21.5	28.6
88.9	84.3	88.9	106	1.6	12.7	21.5	28.6
114.3	109.1	114.3	130	1.6	12.7	21.5	28.6



Blank (16AMP)

Size	A	D
A37	34	6.3
φ12.7- φ19	25.2	5.0
φ25- φ38	50.5	6.3
φ51	64.0	6.3
φ63	77.5	6.3
φ76	91.0	6.3
φ102	119.0	7.9
φ133	166.7	10.6
φ203	217.7	11.1
φ254	268.5	13.0
φ305	319.3	13.0

J&O FLUID CONTROL CO., LIMITED